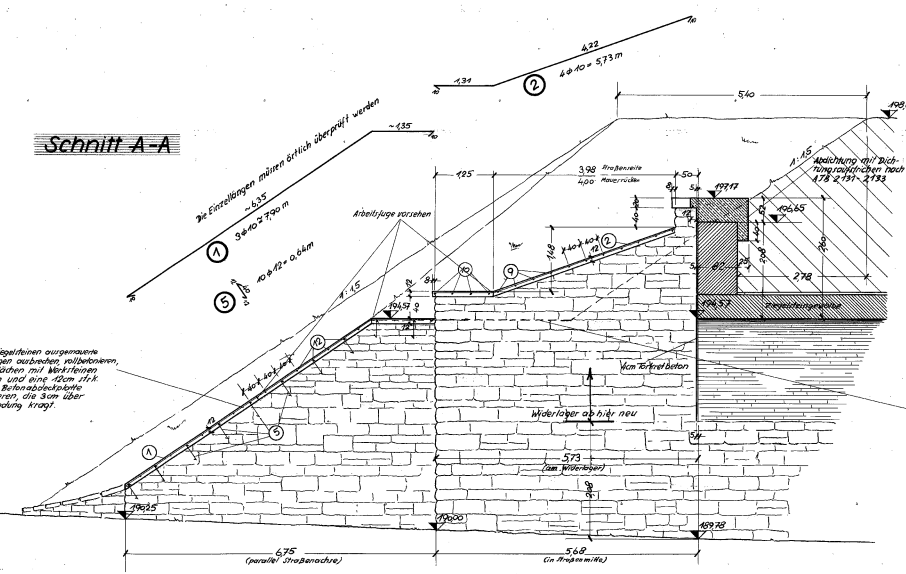
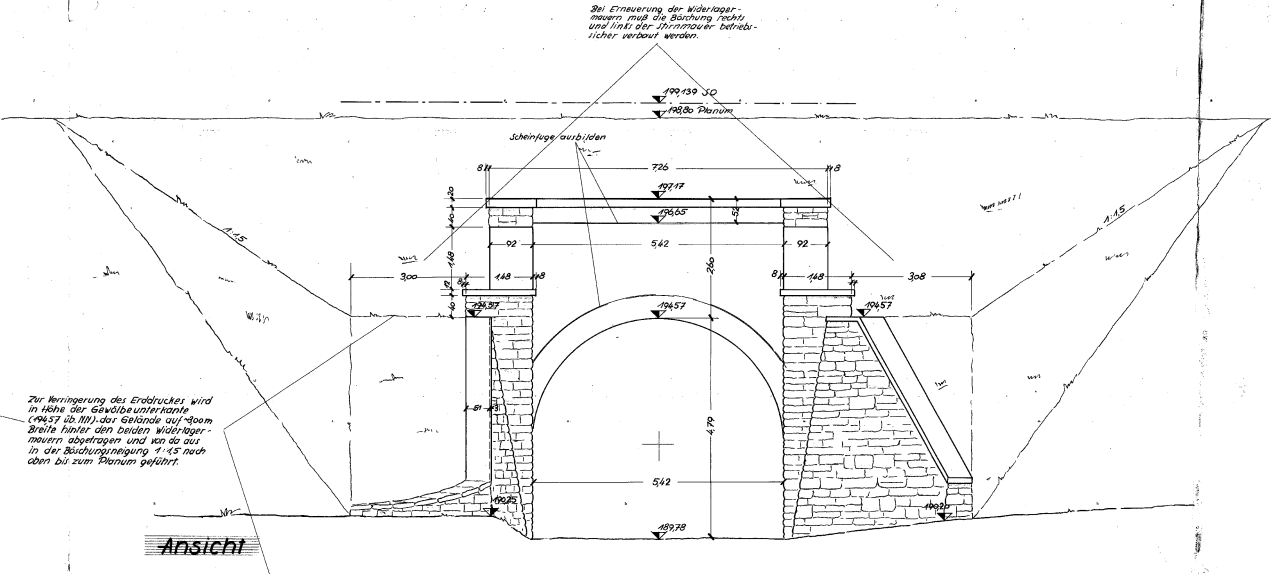


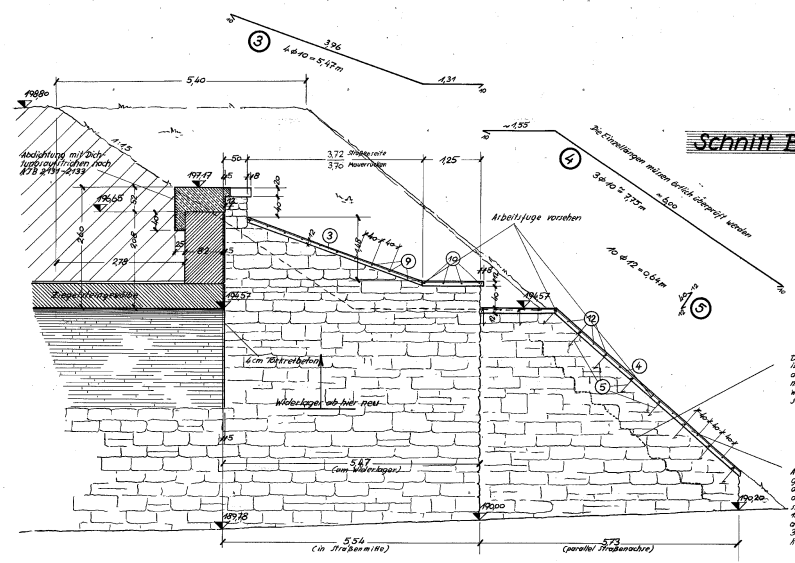
Schnitt A-A



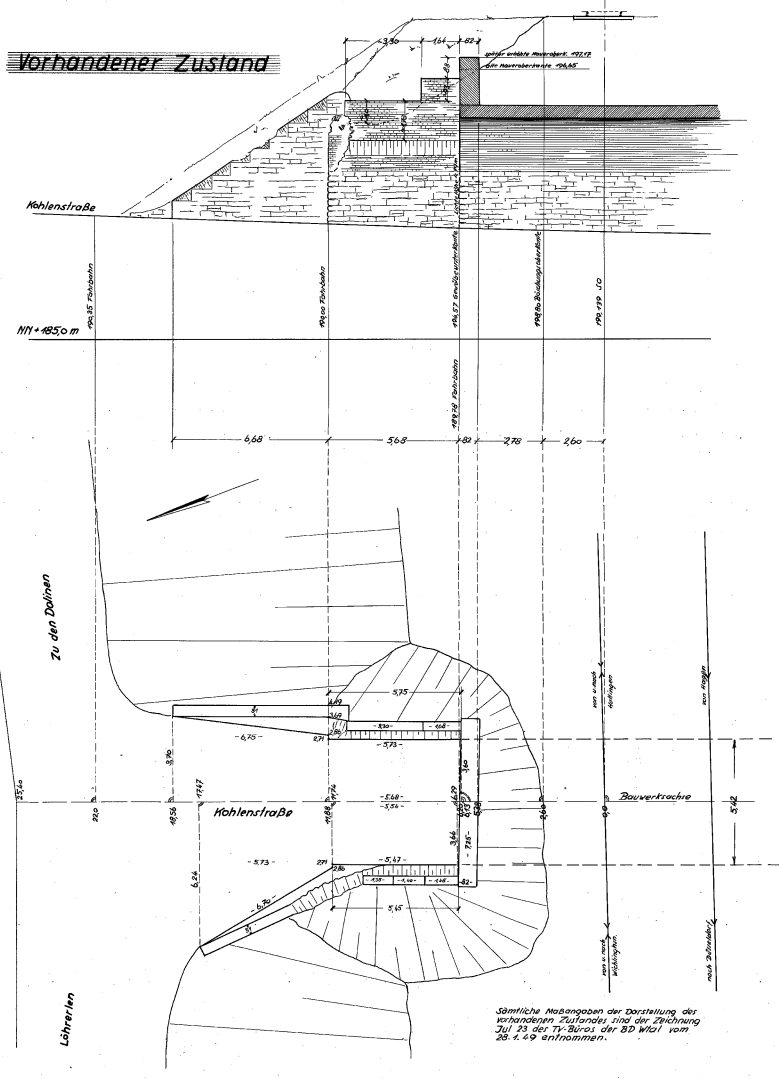
ANSICHT



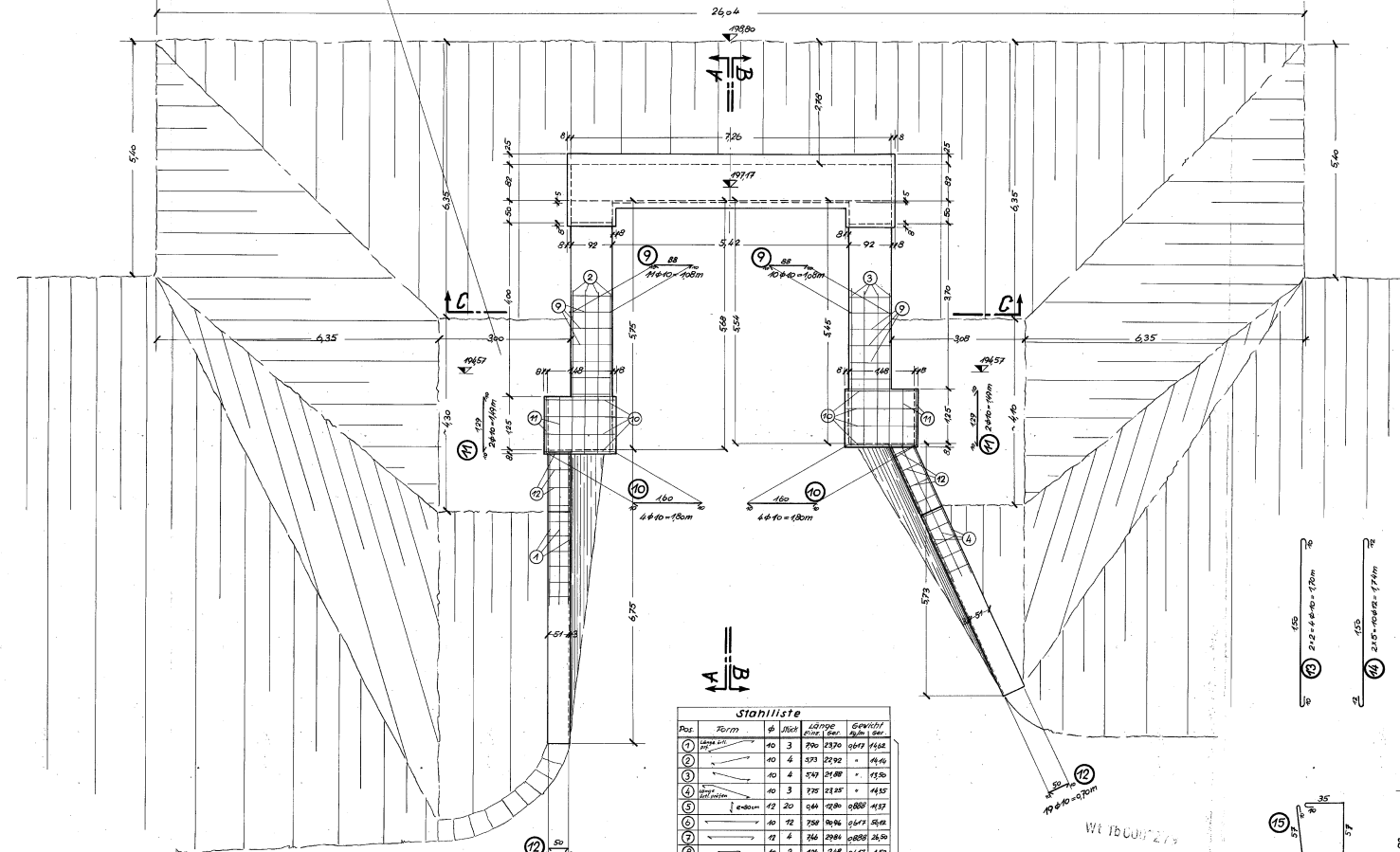
Schnitt B-B



Vorhandener Zustand



Grundriß



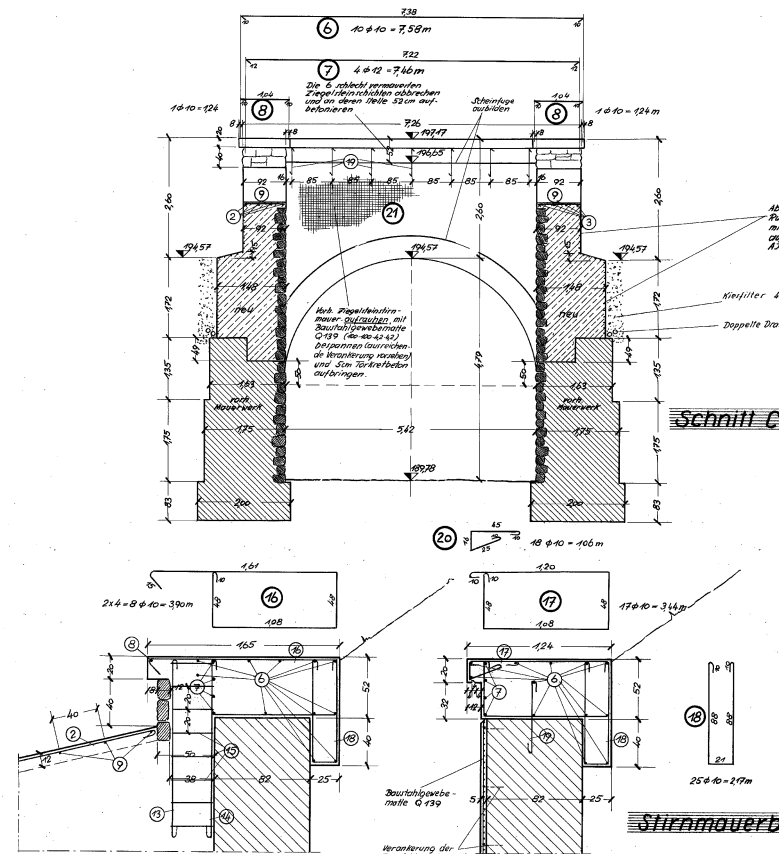
Stahlliste

Pos	Form	Ø	Länge	Gewicht
1	...	40	3	230
2	...	40	4	270
3	...	40	3	270
4	...	40	3	270
5	...	40	3	270
6	...	40	3	270
7	...	40	3	270
8	...	40	3	270
9	...	40	3	270
10	...	40	3	270
11	...	40	3	270
12	...	40	3	270
13	...	40	3	270
14	...	40	3	270
15	...	40	3	270
16	...	40	3	270
17	...	40	3	270
18	...	40	3	270
19	...	40	3	270
20	...	40	3	270
21	...	40	3	270
22	...	40	3	270
23	...	40	3	270
24	...	40	3	270
25	...	40	3	270
26	...	40	3	270
27	...	40	3	270
28	...	40	3	270
29	...	40	3	270
30	...	40	3	270
31	...	40	3	270
32	...	40	3	270
33	...	40	3	270
34	...	40	3	270
35	...	40	3	270
36	...	40	3	270
37	...	40	3	270
38	...	40	3	270
39	...	40	3	270
40	...	40	3	270
41	...	40	3	270
42	...	40	3	270
43	...	40	3	270
44	...	40	3	270
45	...	40	3	270
46	...	40	3	270
47	...	40	3	270
48	...	40	3	270
49	...	40	3	270
50	...	40	3	270
51	...	40	3	270
52	...	40	3	270
53	...	40	3	270
54	...	40	3	270
55	...	40	3	270
56	...	40	3	270
57	...	40	3	270
58	...	40	3	270
59	...	40	3	270
60	...	40	3	270

Baustoffe

- Betonklasse B 450
- Arbeitsbreite 0.7 u. 7-30mm
- Zementart 42.5
- Wärmeisolation 1) für Stützmauerbetten 2) für unteren Widerlagerabsatz 3) für Bauwerksgewebe
- Stahlart Stahl I

Schnitt C-C



Instandsetzung
Unterführung Kohlenstraße
 Km 2361 / Wichlinghsen-Hatt
 Brückennummer 754

Jbb 3955
 33
 36,654
 754
 17
 Muppertal, den 22. 11. 1986
 Bundesbahndirektion
 DEZ 48